

Food Service Data Management Cloud



Solution for Ho.Re.Ca., ice-cream & pastry,
farm food shops and small food stores

DIXELL™


EMERSON™



The Food Service Data Management Cloud solution (FS.Da.Ma.), which includes both portal and Wi-Fi gateway, has been developed for the Food Service market with special attention to applications for Ho.Re.Ca., ice-cream & pastry, farm food shops, gas stations, butcheries, and small food stores.



The offered solution requires the use of Emerson electronic controllers (for refrigerated cabinets, counters, etc.). The optimized food preservation for the food industry is guaranteed through the collection and storage of necessary data for HACCP evaluation as well as through the alarm notifications of the connected refrigerated cabinets.

The remote control allows to intervene on each single cabinet every time maintenance or parameter changes are needed, guaranteeing rapid response by a high-qualified staff.

Optimized food preservation for Ho.Re.Ca., ice-cream & pastry, farm food shops and small food stores

Applications

The new platform for the centralized management of the plant is the best solution that allows easy access to all your installations, no matter where both they or you are. Today optimizing each task and increasing the business rapidly are goals that are more and more feasible thanks to the new technologies that Emerson offers with its Food Service Data Management Cloud.



Ho.Re.Ca.

Canteens, Hotels, Restaurants, Catering



Farm Food Shops

Dairy & Cheese, Butcheries, Farm Stands



Ice-cream & Pastry

Ice-cream & Pastry shops



Small Food Stores

Small Food Stores, Cold Storage, Gas Stations





SERVICE

For each user

Each user (owner, customer service, etc.) has access to services and information necessary and aimed at optimizing their task.



OWNER



Plug&Play

Your installation is now easy to access in a few seconds, wherever you are, thanks to the automatic association of the controllers with the Cloud.



Simplified control

Quick and easy access to all the information you need thanks to the remote monitoring function and the simple interaction with the single units on the field.



Complete security

Your system is continuously monitored and tested according to international cyber security criteria, with the aim to guarantee information protection and avoid possible interruptions caused by cyber-threats.



Optimized maintenance

The remote analysis of the plant allows reduction in maintenance costs thanks to the advanced alarm management and preventive identification of critical functioning situations.



Optimized visualization

The portal pages, developed with responsive technology, provide an excellent display of information, independently of the type of device used.



Energy saving

Consumption and waste reduction through to the work condition analyses and the enhancement of the installation performance.



Optimal preservation

The data reports for each cabinet or installation, ensure compliance with all international regulations on food safety (HACCP standards).



Food quality

Precise temperature regulation, event visualization and alarm management ensure the best quality for fresh and frozen food.



The complete solution



The solution is composed of the Cloud portal, the IoT gateway and of the controllers directly installed on the units in the field. Emerson offers a management system that is completely integrated and highly flexible, adapting itself perfectly to the needs of any kind of users.

Cloud Portal



IoT gateway



Wi-Fi gateway

Up to 5 devices for single gateway

Controller network



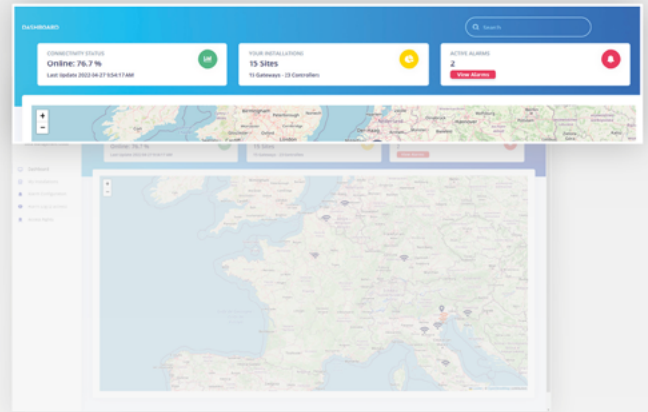
- Bottle coolers
- Wine coolers
- Refrigerated cabinets
- Refrigerated counters
- Pastry & ice cream cases
- Freezers
- Specialty refrigeration
- Cold rooms

Cloud portal



Performance and alarm status

- Clear indications about installations: how many gateways and devices are connected, different colors to highlight warning or alarm conditions.
- Immediate off-link notification: visual notification about network status.
- Immediate alarm notification: speed up countermeasures to avoid food and energy waste.



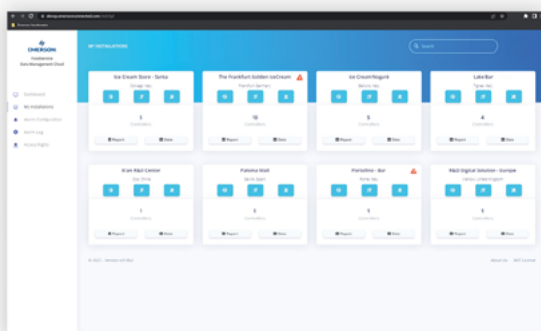
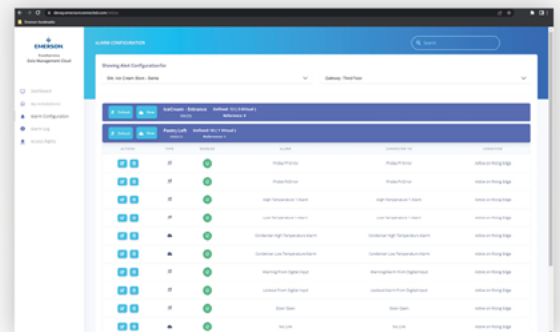
HACCP reports

- Automatic data logging; plug&play and start saving data from installations.
- 24/7 real time temperature and alarms: continuous site monitoring.
- All data are saved and always available on the cloud databases: no worries about making local backups.
- No manual work: automatic HACCP report creation simplifies operations and reduces effort (automatic report distribution not yet implemented).



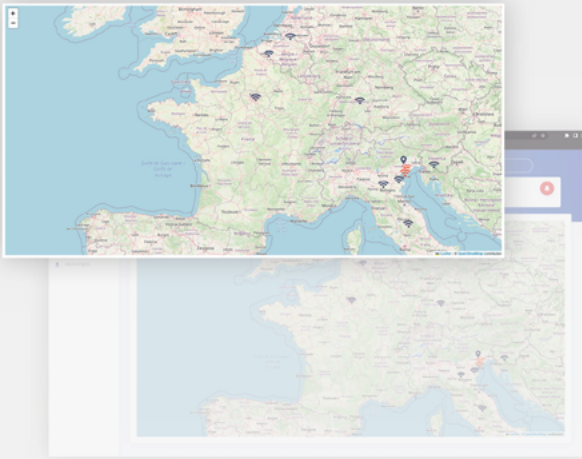
Alarm management

- Virtual alarm configuration: define additional events that best suit the application (for example the “on-off” alarm following a stand-by condition).
- List of all active alarms with specific information as:
 - Which device
 - Which variable with current value
 - Start, end and duration of the event



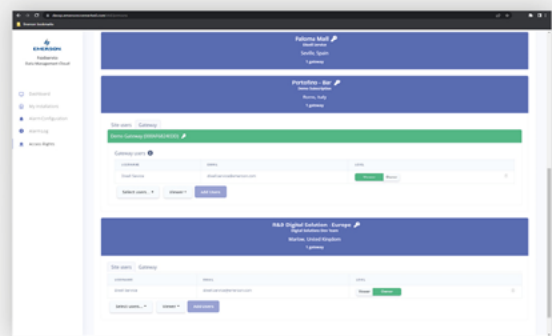
Site data

- Summary for any cabinet/controller installed: take a look at the sites and check the situation.
- Direct access to data and charts: inspect the controller/application you want and when you need.



Interactive map

- Geographical data analytics: facility manager can easily take sites and equipments under control.
- Expensive and/or strategic equipment can be carefully monitored.



User management

- Team definition and management: an easy way to add or remove people who can access to specific installations.
- Multi ownership: simplify site management and avoid delays due to the absence of someone on the team.



Historical Charts

- Multi trace chart: both analog and digital variables can be compared in the same chart.
- Preset or customized intervals for data visualization: a short interval for inspection or longer times for trend analysis.
- Trace overlapping: select two or more available variables and discover what is happening.



Parameters

- Full parameter map download: automatic creation of a WIZMATE compatible file format to share with other people or Service.
- Single parameter modification: acts only where you need.
- Single parameter search filter: perfect when you remember part of the parameter label.
- Parameter group selection: check and modify all parameters related to a specific feature (for example Defrost).

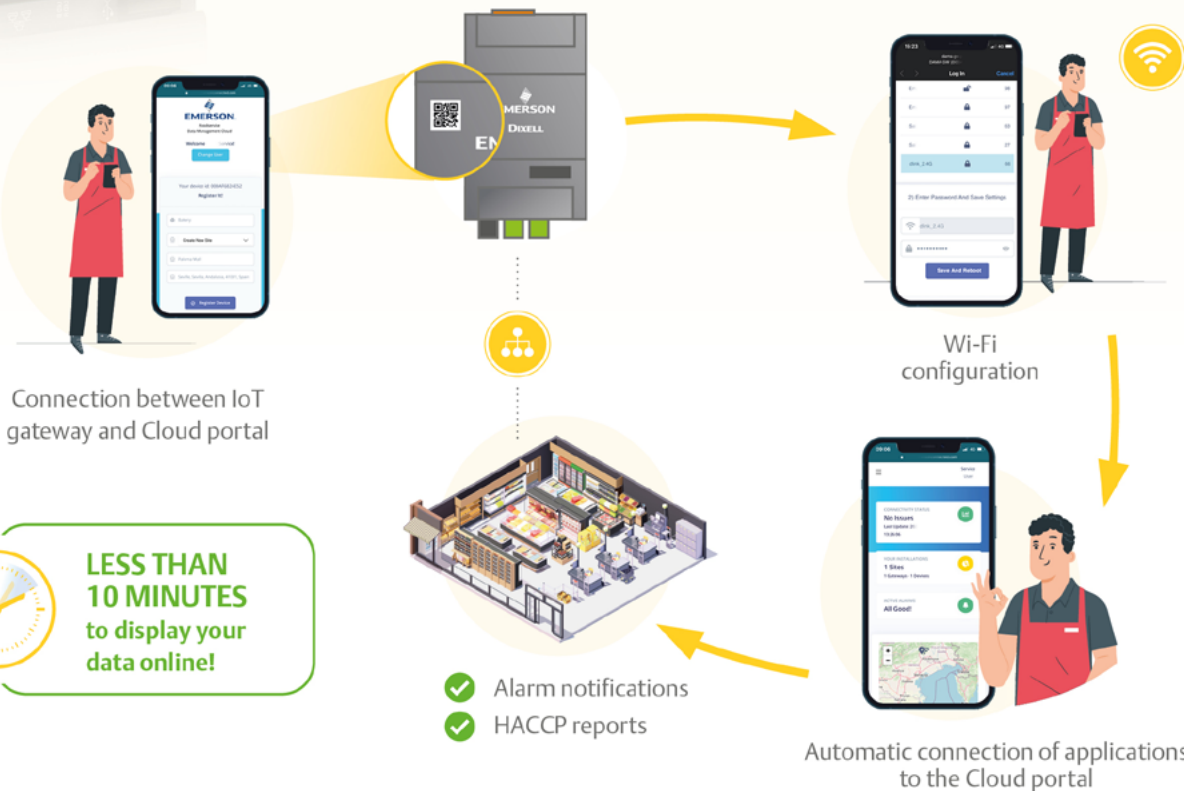
Name	Description	Unit	Value
Parameter 1	Parameter 1 description	Unit 1	Value 1
Parameter 2	Parameter 2 description	Unit 2	Value 2
Parameter 3	Parameter 3 description	Unit 3	Value 3
Parameter 4	Parameter 4 description	Unit 4	Value 4
Parameter 5	Parameter 5 description	Unit 5	Value 5
Parameter 6	Parameter 6 description	Unit 6	Value 6
Parameter 7	Parameter 7 description	Unit 7	Value 7
Parameter 8	Parameter 8 description	Unit 8	Value 8
Parameter 9	Parameter 9 description	Unit 9	Value 9
Parameter 10	Parameter 10 description	Unit 10	Value 10

IoT gateway



The IoT gateway, available in 4DIN format and with 24Vac power supply, allows you to connect a controller network to the Cloud intuitively and quickly.

- Fast and intuitive association between the gateway and the user's account on the Cloud with few and easy steps.
- Quick connection of the gateway to an access point.
- No configuration needed: the "Zero Touch Configuration" approach allows you to automatically connect the electronic controllers (compatible with Emerson products and connected to the IoT gateway) to the Cloud portal.
- Connection between the IoT gateway and electronic controllers through Modbus protocol on a 2-wire RS485 network.



Our proposals

Two kits (IoT gateway, power supply and Wi-Fi dongle) are available and differ for the maximum number of Emerson electronic controllers that can be connected to the Cloud portal.

<p>CLOUD 3</p> <p>Up to 3 devices</p>	<p>CLOUD 5</p> <p>Up to 5 devices</p>	<p>Services:</p> <ul style="list-style-type: none"> • HACCP report • Alarm management with notifications • Historical graphs • Remote reading and writing of parameters
--	--	--

The offer is subject to promotion. Please contact Dixel S.r.l. to receive further information as well as the list of compatible Emerson controllers.

Emerson Commercial & Residential Solutions

Dixell S.r.l. - Z.I. Via dell'Industria, 27 - 32016 Alpago (BL) ITALY - Tel. +39.0437.9833 r.a. - Fax +39.0437.989313
EmersonClimate.com - Dixell@Emerson.com

release 1.0 - 1582007400-GB

All trademarks are property of their respective owners. Dixell reserves the right to alter its products without notice. All rights reserved. Because environmental conditions are outside of Dixell's control, we cannot assume liability for results obtained nor any damages that may occur due to improper application. Manuals and updates are available on our Web Site EmersonClimate.com

EMERSON. CONSIDER IT SOLVED.™