

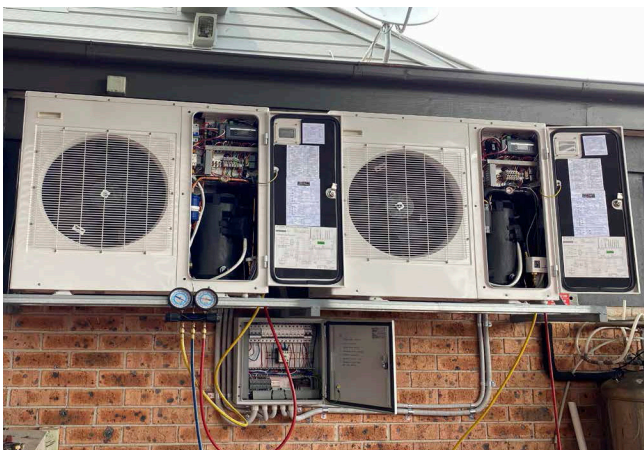
COPELAND ZX CONDENSING UNITS

# Global fast food chain in Australia achieves cost savings and energy efficiency

*Copeland helped the fast food chain achieve low operating costs, easy servicing and maintenance, and visibility to energy monitoring.*

## Customer

The global fast food chain originated in the US in 1955 and established its roots in Australia in 1971. It currently has more than 1000 branches across Australia, 80% of which are franchises by individual entrepreneurs, and employs more than 100,000 people working in both the food service and corporate side of the business.



## Challenge

The fast food chain decided to upgrade its branches' current refrigeration systems. It needed a new and efficient solution that could help reduce operating expenses, achieve energy efficiency and minimize noise for some of its stores located near residential areas. The establishment also sought a compact refrigeration system that wouldn't take up too much space.

## Solution

To analyze the feasibility of employing a new refrigeration system, the fast food chain tapped Copeland as its solutions provider and project manager. It also conducted a test run of the new refrigeration system in one of its stores in Inner West Sydney for one year. Copeland provided two Copeland ZX condensing units, one for low temp (Freezer Room) and the other for medium temp (Cool Room) to replace the store's existing semi-hermetic and hermetic reciprocating compressors.



Before and after, Copeland monitored and tested the energy efficiency of the branch's current refrigeration system, setting a benchmark for the analysis. After installing its Copeland ZX condensing units, Copeland monitored its performance and compared it with the store's existing system.

## **Result**

---

At the conclusion of the project, the fast food chain found that Copeland's solution was 25% more efficient than its previous refrigeration system. Due to the products' built-in diagnostic protection capabilities and plug-and-play features, the Copeland ZX condensing units also improved the serviceability of the establishment's refrigeration system, reducing the need for manual monitoring of the system's performance and for maintenance in cases of downtimes or system failures.

Since the Copeland ZX condensing units are compact, with all of their parts boxed in a single unit, the fast food chain was able to easily mount the system on its wall instead of installing it on a larger, dedicated space. This helped the establishment reduce its installation footprint and minimize noise in consideration of the residents living nearby.

Ultimately, Copeland helped the fast food chain achieve low operating costs, easy servicing and maintenance, and visibility to energy monitoring. It already approved Copeland as its go-to solutions provider and the Copeland ZX condensing unit as its ideal refrigeration system in the future.

**Scan to visit:**



**ZX Condensing Unit**

**To learn more, visit [copeland.com](https://www.copeland.com)**

©2024 Copeland LP.

**COPELAND**  
Engineered for Sustainability