

MRLDS-450 Application In E2

Installation Guide

Note: Installing the MRLDS-450 requires version E2E 4.10F01 or later. You must add a description file for version E2 3.10F01 or less.

New Installation: Uploading the MRLDS-450 Description File to E2

The MRLDS-450 requires adding a description file (P/N 527-0754) and license key to E2 version 3.0X or later. Contact Customer Service to obtain this information:

Email: Solutions.CustomerService@Emerson.com

Phone: 770-425-2724 Option 4

Note: UltraSite32 software should be installed to perform a description file upload.

Connect to E2 using UltraSite32

1. Launch UltraSite program and login.
2. View the **Directory Level** and then **Site Level**.
3. Right-click **Site Level** and click **Connect**.
4. Locate the E2 where the **MRLDS_450.dsc** will be installed.
5. Right-click the unit and select **Upload Description File**.
6. Click **Browse** to select the appropriate description file (5270754.dsc) file for MRLDS-450 from the computer and click **Open**.
7. Click **Upload**. A window will display the description file was successfully imported. Click **OK**. The description file should appear inside the window.
8. **Once completed, disconnect from the E2 and reboot the E2 controller.**

Note: Do not omit the step of rebooting the controller.



Device Setup

E2 Serial Port Setup

1. Log into the E2 controller.
2. Press **Menu**, **7**, **3**, and **1** (General Controller Information), then press **F2** twice to move to the **C3: Serial** tab.
3. Press the down arrow key to the **COM Connection** where the device is wired.
4. Press **F4** (**LOOK UP**) and select **MODBUS-1**, **MODBUS-2** or **MODBUS-3**, then press **Enter** to set configuration.
5. Press **F4** to select options and set the MODBUS connection as follows:

COM Baud:	19200 Baud
COM Data Size:	8
COM Parity	Even
COM Stop Bits:	1
6. Press **Enter** to set configuration, then **Save** to save changes.
7. Press **Home** to return to the *Home* screen.

MODBUS Connection

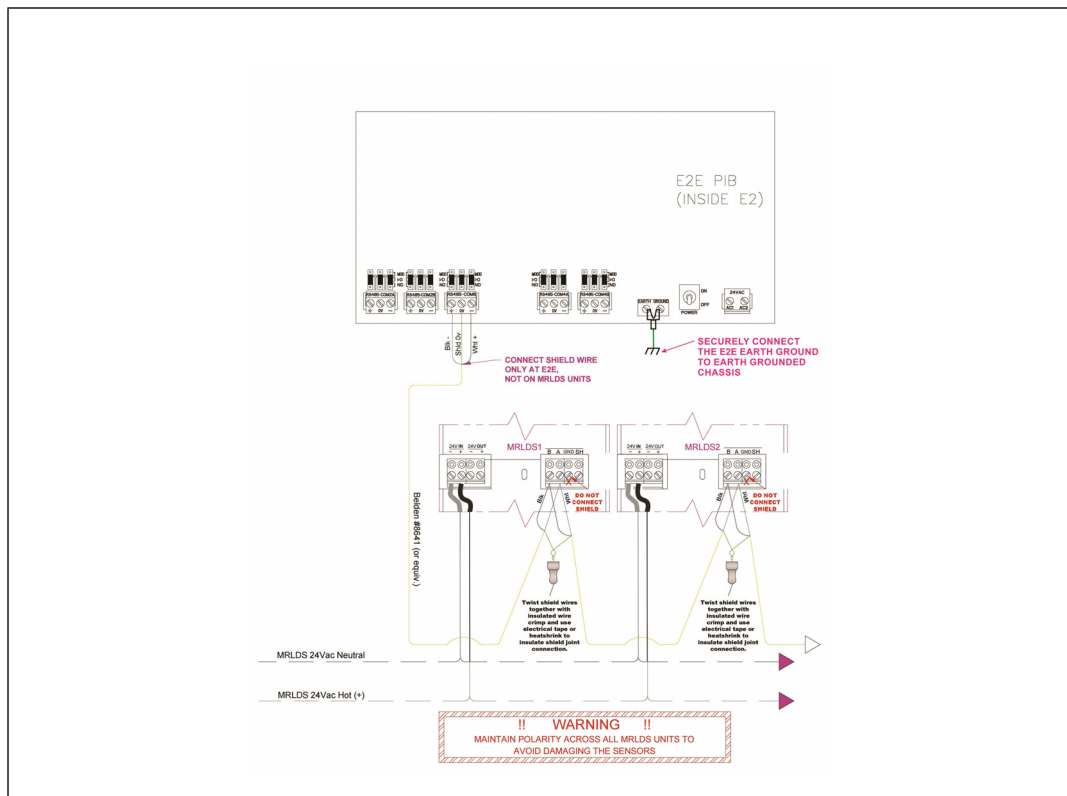



Figure 1 - E2 Device and COMM Setup

Adding the MRLDS-450 Application in E2

1. Press  then **&7**, **&7**, and **@** to enter *Connected I/O Boards and Controllers*.
2. Press **F2** to move to the **C3: ECT** tab. Highlight the **MRLDS-450** application and enter the desired number of devices under **Quantity** up to a maximum of **15**.

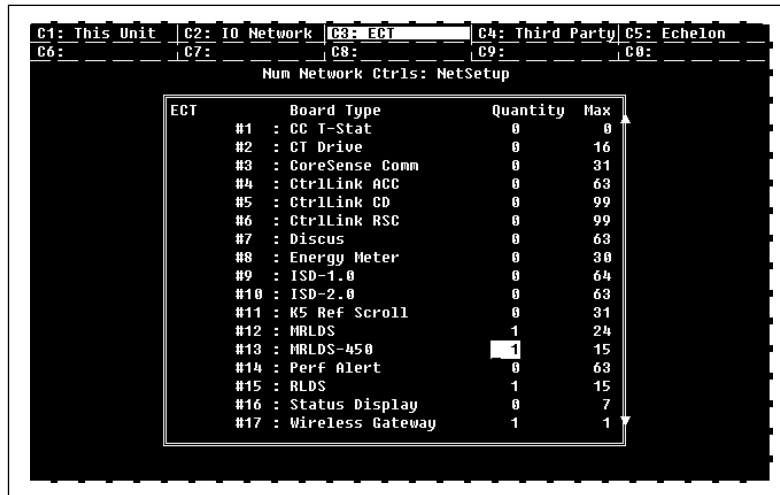




Figure 2 - ECT Tab

3. Press  to save the changes.
4. Press  to return to the *Home* screen.

Commissioning the MRLDS-450

1. Press  then **&7**, **&7**, and **1** to enter the *Network Summary* screen.
2. Highlight the MRLDS-450 to be commissioned and press **F4**

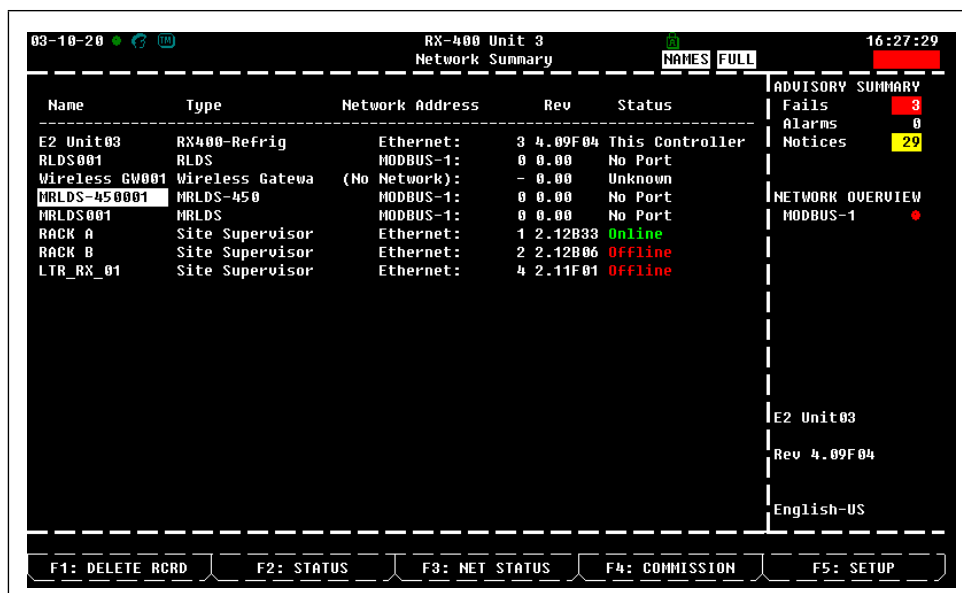



Figure 3 - Network Summary Screen

3. If a box with **Select Network** appears on the screen, select the MODBUS number where you configured the device – either **MODBUS-1**, **MODBUS-2**, or **MODBUS-3** and press 

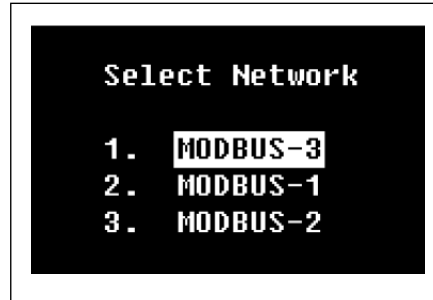



Figure 4 - Select MODBUS output

4. Select the address for the device and press 

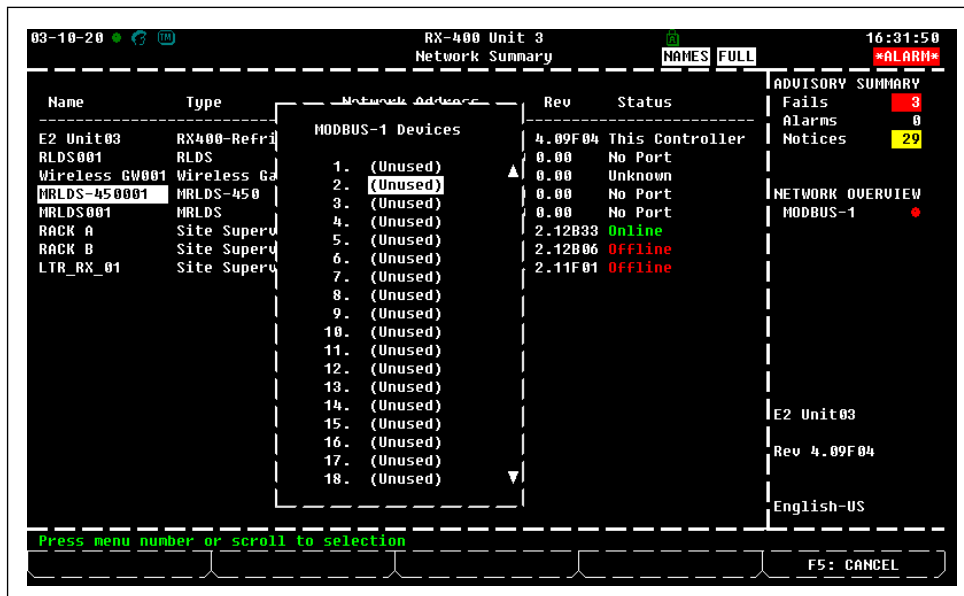



Figure 5 - Select Device Address

Note: The MODBUS address must be the same as the address assigned on the device.

5. A window will appear. Press  to continue.

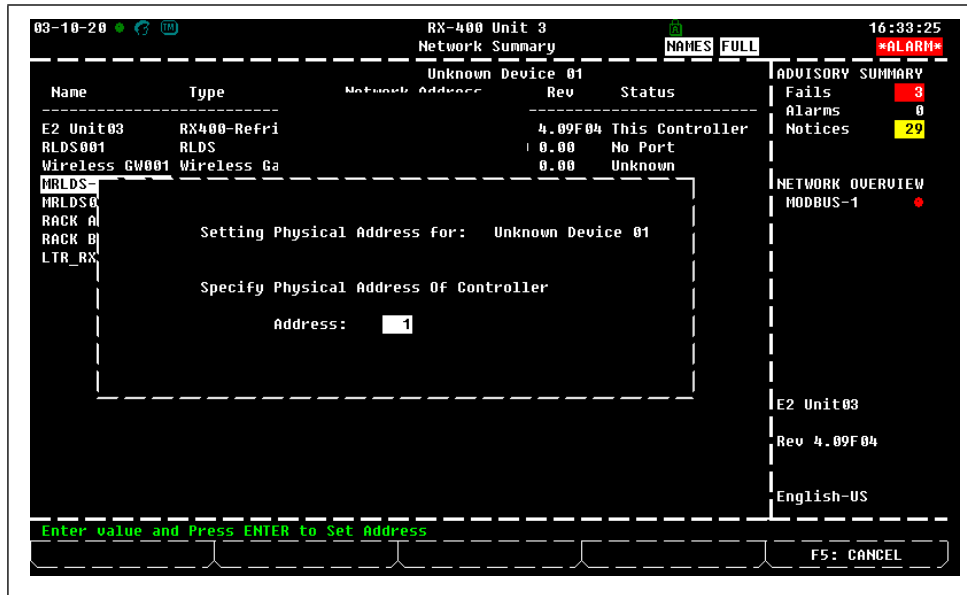








Figure 6 - Set the Physical Address for the MRLDS-450

6. Press  to save the assigned address.

7. Press  to return to the Home screen and press  then , , and  to enter the Network Summary screen again.

8. After a few seconds, the MRLDS-450 should appear **Online**.

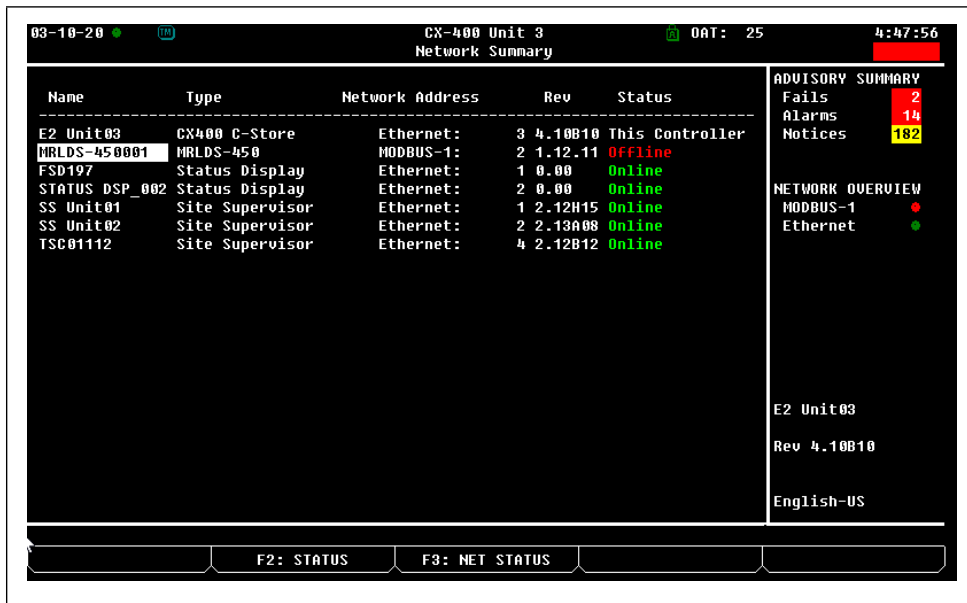


Figure 7 - MRLDS-450 Network Summary Screen Online Status

Viewing the Status

- Press **Menu** then **5**, **4**, **0** and **0** (this is equivalent to pressing **Menu**, **5**, **4**, **0**, **0**) or use the cursor to navigate to MRLDS-450 and press **Enter**

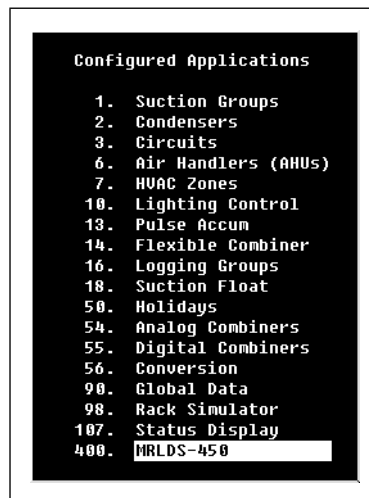


Figure 8 - Configured Applications

- View the status of the detector on the MRLDS-450 Summary screen and press **F5** to go to **Setup**.

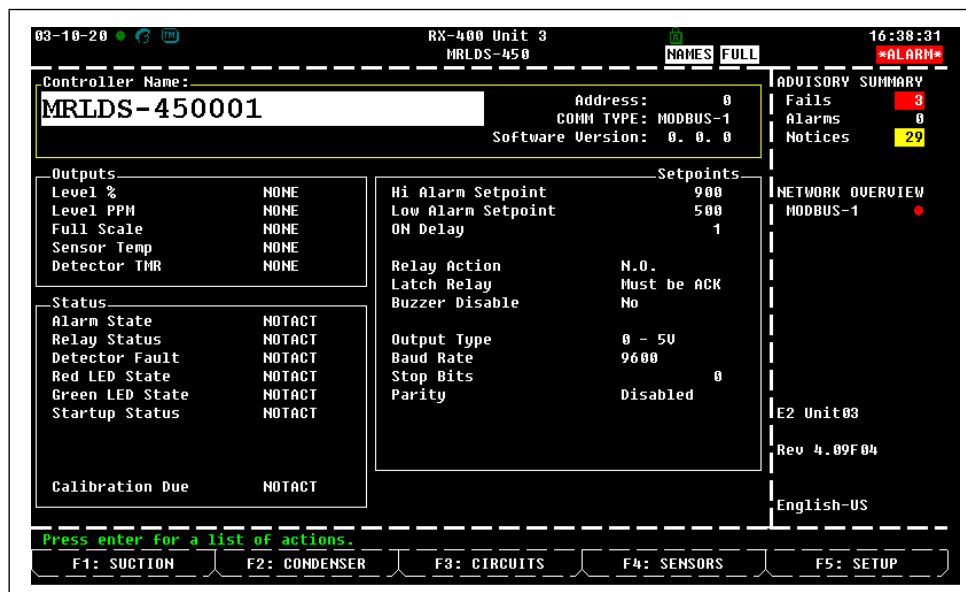


Figure 9 - MRLDS-450 Status Screen